

CITY OF NAPERVILLE ELECTRIC UTILITY EQUIPMENT CLEARANCE REQUIREMENTS



The Department of Public Utilities-Electric (DPU-E) is dedicated to providing quality service to its customers. To facilitate quality service, all electric equipment must be accessible to our personnel. A fence is a major obstacle to our electrical equipment. The two pieces of electrical equipment that are most commonly obstructed by fences are transformers and pedestals. The required clearances for installations near transformers and pedestals are listed below.

TRANSFORMERS:

A ten foot (10') clearance in front (side with padlock) and five feet (5') on sides and back is required. If proper clearance cannot be achieved, a gate or removable fence section must be installed in a manner so a portion of fence can be removed without the use of tools. If a gate or removable fence section must be installed, a five (5') clearance must exist in front of the transformer prior to the installation of the gate or removable section. Padlocks for the gates or removable sections will be supplied by DPU-E.



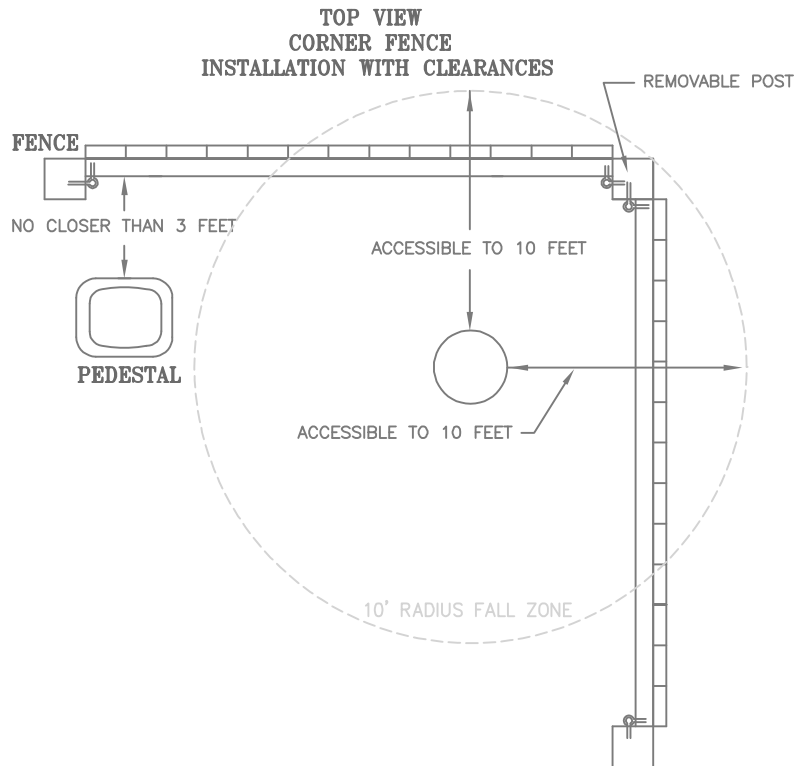
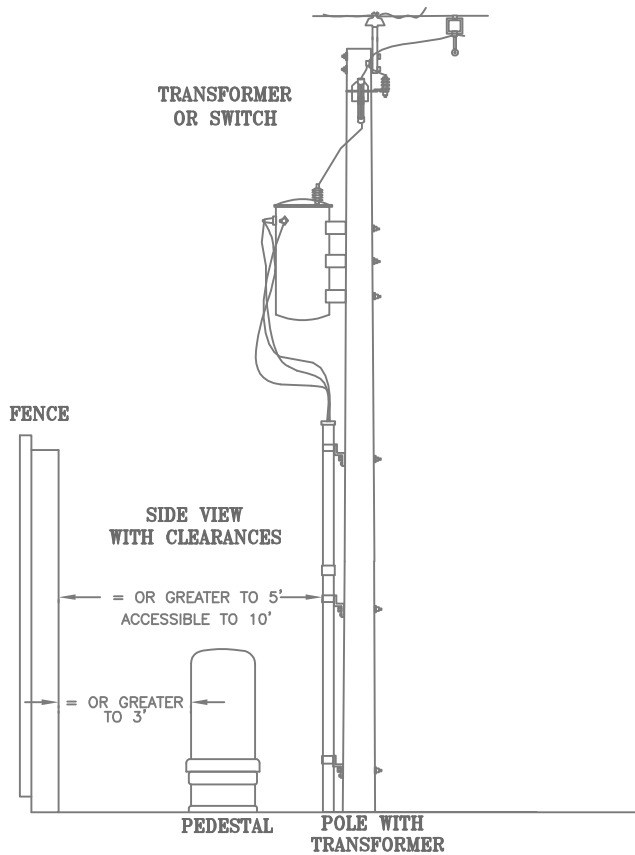
PEDESTALS:

A three foot (3') clearance on all sides must be maintained. If this clearance cannot be achieved, a gate or removable fence section must be installed in a manner so a portion of fence can be removed without the use of tools. Padlocks for the gate or removable fence section will be supplied by DPU-E.



YOU MUST CALL IN A J.U.L.I.E. (Joint Underground Locating Information for Excavators) FOR ANY TYPE OF DIGGING THAT WILL BE TAKING PLACE. CALL TOLL FREE TO OBTAIN A J.U.L.I.E. AT 1-800-892-0123 AND RETAIN YOUR J.U.L.I.E NUMBER FOR YOUR RECORDS.

IN CASE OF A HIT CABLE PLEASE CALL CITY DISPATCH AT 630-420-6187
Upon completion of the fence please call Code Enforcement at 630-420-6693 to schedule an inspection. If you have any further questions concerning this matter, you may contact DPU-E Customer Metering and Power Quality at 630-420-6711.



DPU-ELECTRIC RULES AND REGULATIONS:

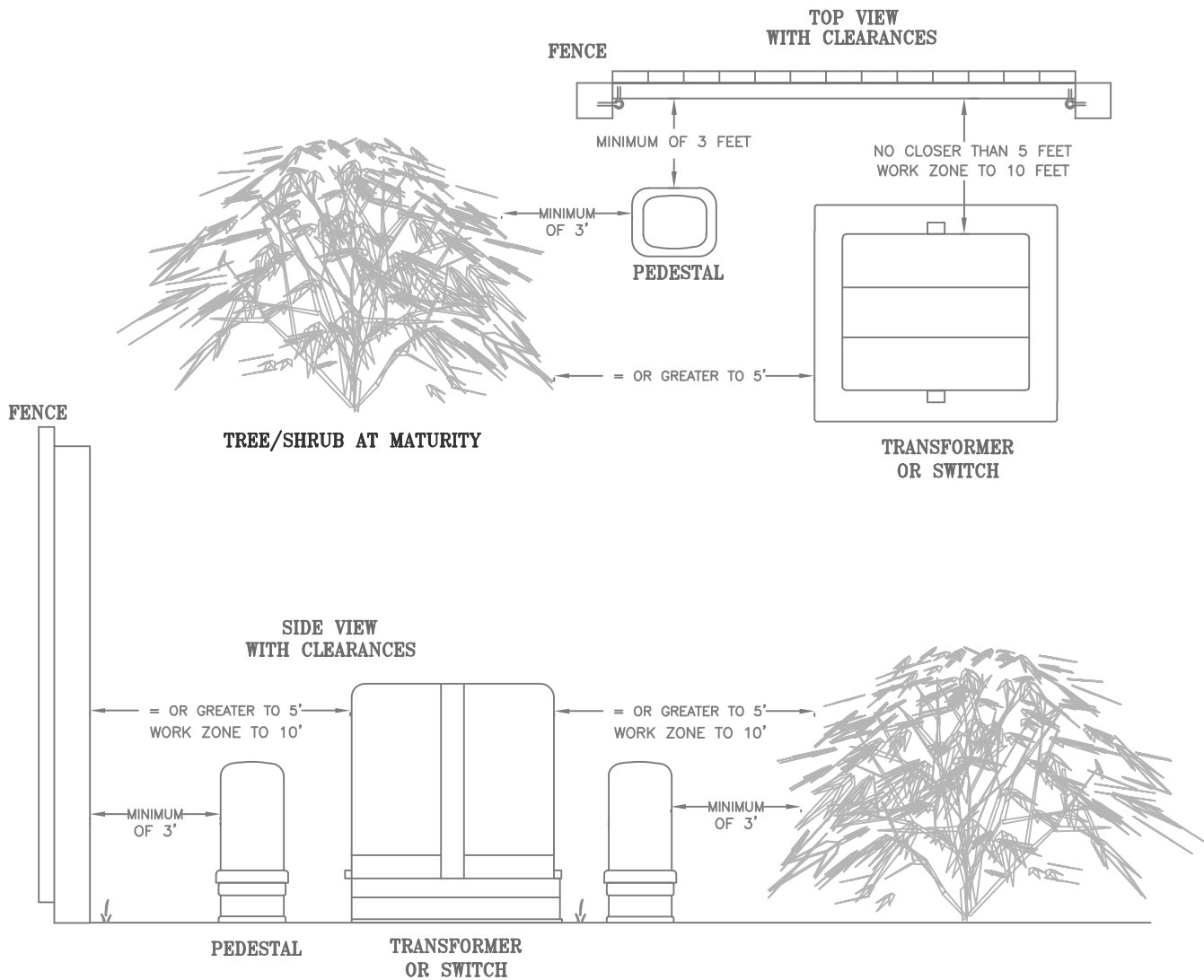
UTILITY POLES MUST HAVE AT LEAST A 5' RADIUS CLEARANCE AND ACCESSIBLE TO A 10' RADIUS CLEARANCE RADIUS FOR DPU-E WORKERS. ALL PEDESTALS MUST HAVE AT LEAST 3 FEET OF CLEARANCE.

SHOULD A PORTION OF THE FENCE FALL INTO THE 10' WORK ZONE THEN THE FENCE MUST BE CONSTRUCTED IN A MANNER SO THAT PORTION OF FENCE CAN BE REMOVED WITHOUT THE USE OF TOOLS. (SEE DPU-E STANDARD C10-0110 FOR DESIRED CONSTRUCTION METHOD).

A GATE MAY BE CONSTRUCTED RATHER THAN A REMOVABLE SECTION. THE SAME CLEARANCES STILL APPLY IN THIS APPLICATION AS WELL AS CONSTRUCTION STANDARDS.

SHOULD YOU WANT TO SECURE YOUR PROPERTY (ONLY ON THESE REMOVABLE SECTIONS AND GATES) DPU-E WILL PROVIDE A LOCK FOR DPU-E ACCESS ONLY.

NAPERVILLE PUBLIC UTILITIES DEPARTMENT ELECTRIC STANDARDS	FENCE CLEARANCES REQUIRED FOR UTILITY POLES	DATE: 05-25-04 C10-2140
---	---	----------------------------



DPU-E CLEARANCE REQUIREMENTS:

TRANSFORMER AND SWITCHGEAR FRONTS MUST HAVE AT LEAST 10' OF CLEARANCE TO PROVIDE A SAFE WORK ZONE FOR DPU-E WORKERS. THE SIDES MUST MAINTAIN 5' OF CLEARANCE. THIS INCLUDES FENCES*, TREES, SHRUBS, POSTS, SHEDS, OR OBSTACLES.

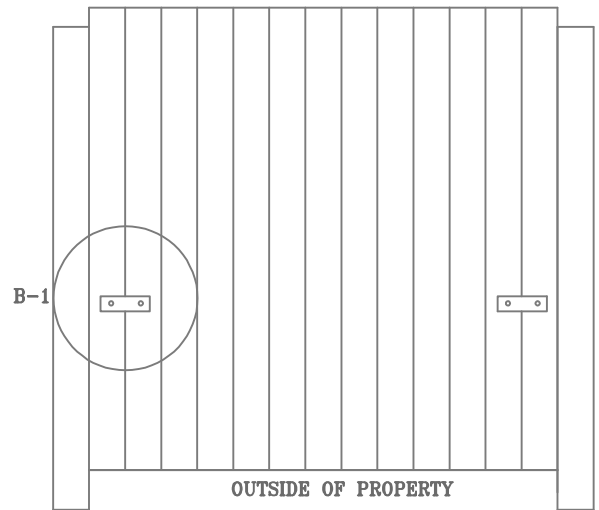
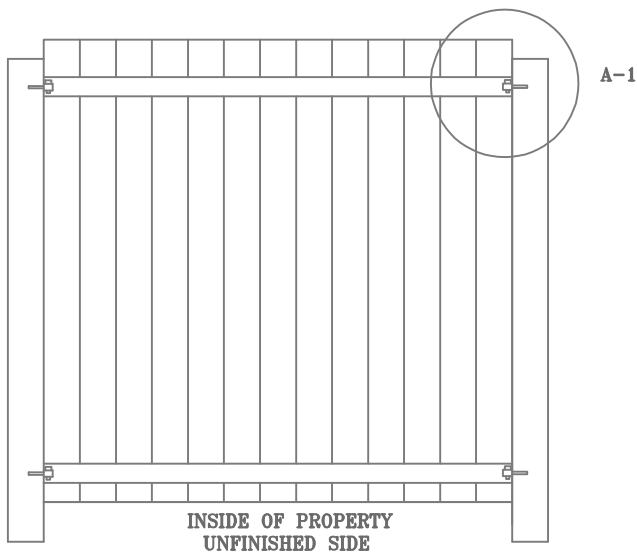
ALL PEDESTALS MUST MAINTAIN AT LEAST 3' OF CLEARANCE AROUND IT FOR DPU-E WORKERS. IF CLEARANCES CAN NOT BE MET THEN THE STANDARD ABOVE WILL APPLY.

*SHOULD A PORTION OF THE FENCE FALL INTO THE 10' WORK ZONE THEN THE FENCE SHALL BE CONSTRUCTED IN A MANNER SO A PORTION OF THE FENCE CAN BE REMOVED WITHOUT THE USE OF TOOLS. (SEE DPU-E STANDARD C10-2110 FOR DESIRED METHOD).

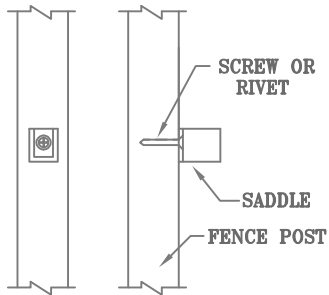
*A GATE MAY BE USED RATHER THAN A REMOVABLE SECTION. THE SAME CLEARANCES STILL APPLY IN THIS APPLICATION AS WELL AS THE CONSTRUCTION STANDARDS.

SHOULD YOU WANT TO SECURE YOUR PROPERTY (ONLY ON THESE REMOVABLE FENCE SECTIONS & GATES), DPU-E WILL PROVIDE A LOCK TO ALLOW FOR DPU-E ACCESS ONLY.

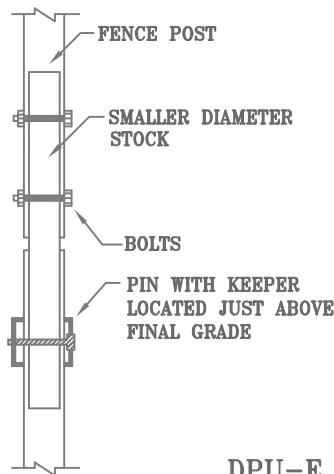
NAPERVILLE PUBLIC UTILITIES DEPARTMENT	PADMOUNT EQUIPMENT CLEARANCE REQUIREMENTS	DATE: 07-14-08
ELECTRIC STANDARDS		C10-2130



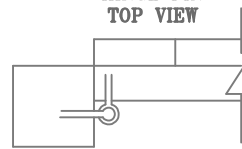
C-1
SECTION DETAIL FOR
REMOVABLE SECTION HANGER



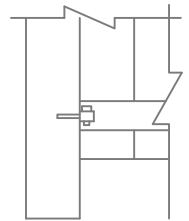
SECTION DETAIL FOR
REMOVABLE POST
FOR ALL FENCE POSTS



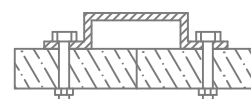
A-1
HINGE PIN
TOP VIEW



A-1
HINGE PIN
SIDE VIEW



B-1
HANDLE



DPU-E RULES AND REGULATIONS:

TRANSFORMER FRONTS MUST HAVE AT LEAST 5' OF CLEARANCE AND ACCESSIBLE TO 10' FOR DPU-E WORKERS. THE SIDES MUST MAINTAIN A 5' CLEARANCE. IF CLEARANCES CAN NOT BE MET THEN THE STANDARDS ABOVE APPLY.

ALL PEDESTALS MUST HAVE AT LEAST 3' FEET OF CLEARANCE. IF CLEARANCES CAN NOT BE MET THEN THE STANDARDS ABOVE APPLY.

UTILITY POLES MUST HAVE AT LEAST A 5' RADIUS CLEARANCE AROUND THE POLE, AND ACCESSIBLE TO A 10' RADIUS CLEARANCE FOR DPU-E WORKERS. ALL PARTS FOR FENCE MUST BE REMOVABLE IN THIS WORK ZONE.

REMOVABLE SECTIONS OF FENCE MUST BE INSTALLED WITH HINGE PINS AT ALL FOUR CORNERS OF THE FENCE. AN ALTERNATE METHOD COULD BE THE USE OF A "SADDLE" CONSTRUCTED OF MATERIALS SIMILAR TO THE MATERIAL OF WHICH THE FENCE IS CONSTRUCTED. ALL HARDWARE MUST BE EITHER GALVANIZED OR STAINLESS STEEL TO EXTEND LIFE OF STRUCTURE.

HANDLES MUST BE INSTALLED ON BOTH ENDS OF THE FENCE SECTION. THIS REQUIREMENT IS ONLY FOR WOOD FENCES.

SHOULD A GATE BE DESIRED RATHER THAN A REMOVABLE SECTION, THEN THE SAME CLEARANCES APPLY AS WELL AS CONSTRUCTION STANDARDS.

SHOULD YOU WANT TO SECURE YOUR PROPERTY DPU-E WILL PROVIDE A LOCK ONLY FOR DPU-E ACCESS.

