



CITY OF NAPERVILLE  
**Road Improvement  
Plan Update**

---

January 28, 2025  
*PUBLIC OPEN HOUSE*

# WELCOME



## ROAD IMPROVEMENT PLAN OVERVIEW

- Purpose
- Project Highlights



## EXISTING ROADWAY NETWORK

- Jurisdiction
- Classification
- Average Daily Traffic Volumes



## PUBLIC INPUT

- Existing Operations -  
Roadway Segments  
and Intersections
- Future Opportunities



## NEXT STEPS

## 1 EXISTING ROADWAY NETWORK

- Review the roadway network under City of Naperville jurisdiction
  - Improvements will not be identified for state, county, and township roadways. Input received for state, county, and township roadways may be shared with the respective agency.
  - Focus on major roadways, including arterials and collectors
  - Consider existing traffic volumes and operational conditions (level of service)

## 2 PUBLIC INPUT

- Comment on areas with traffic delays, poor traffic conditions, or other traffic-related concerns
- Suggest potential improvements

### → MULTIPLE WAYS TO PARTICIPATE!

- Printed map available for comments
- Online mapping tool (available thru 2/14)
- Comment forms

*Note: Public feedback will be considered throughout the planning process and will influence the plan's recommendations.*

- Address mobility concerns identified in 2023 Naperville Community Survey
  - Only 54% of respondents rated “Traffic Flow on Major Streets” as good or excellent
- Last updated in 2007
  - City implemented many projects identified in previous plan
- 2025 Update
  - Evaluate existing and future operational conditions for roadways and intersections under City of Naperville jurisdiction
  - Define capacity-driven improvements to improve traffic flow
  - Inform the City’s Capital Improvement Plan (CIP)
    - ↻ Opportunities for future input during the design process

# Plan Goals



**Improve traffic flow on major streets to support City's mobility goals**



**Prepare cost estimates for future improvements to plan funding sources**

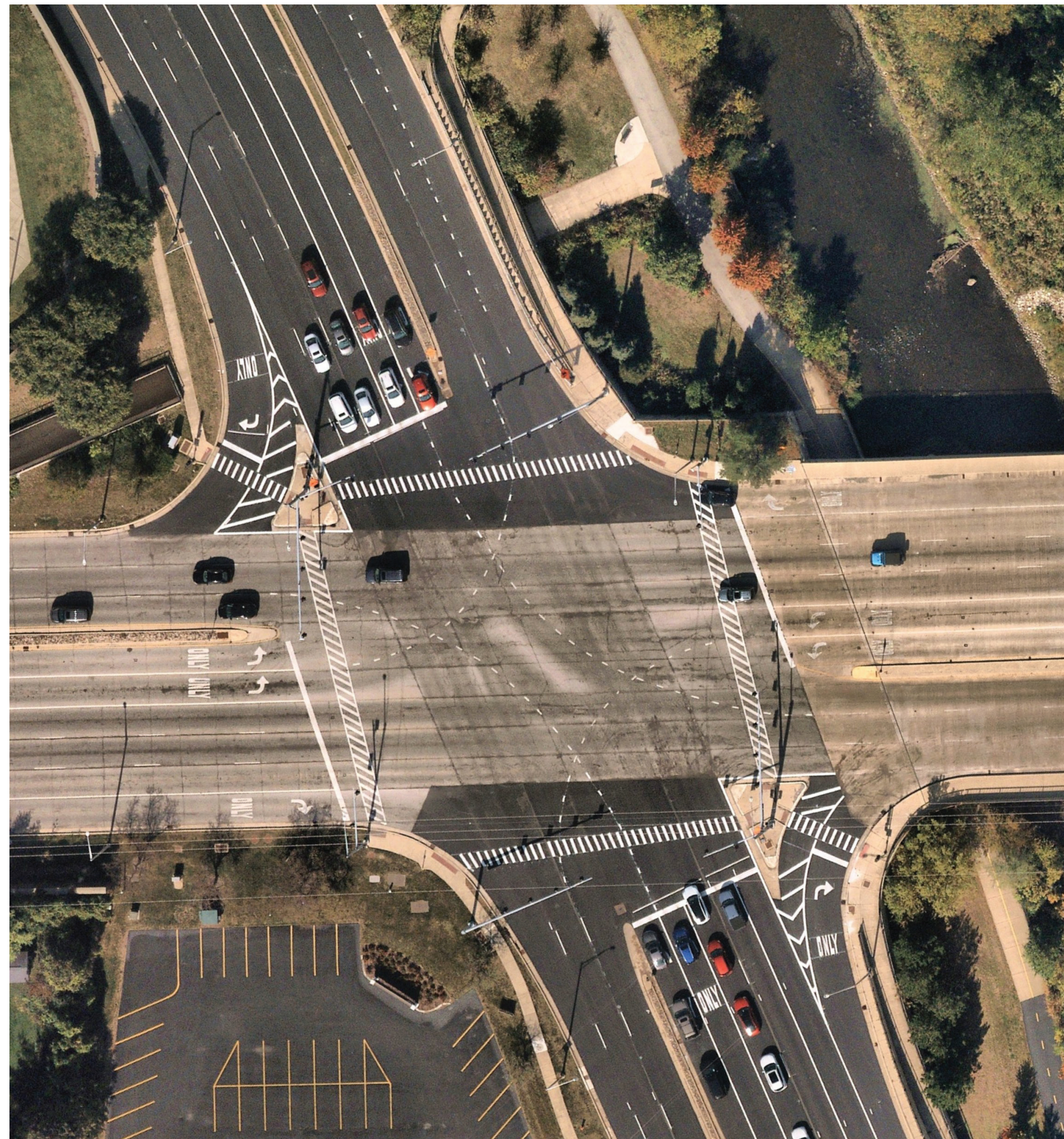


**Lower greenhouse emissions to support sustainability efforts**

*Note: Bicycle and pedestrian improvements will be evaluated as part of the Bicycle and Pedestrian Plan, which is anticipated to occur in 2025-2026.*

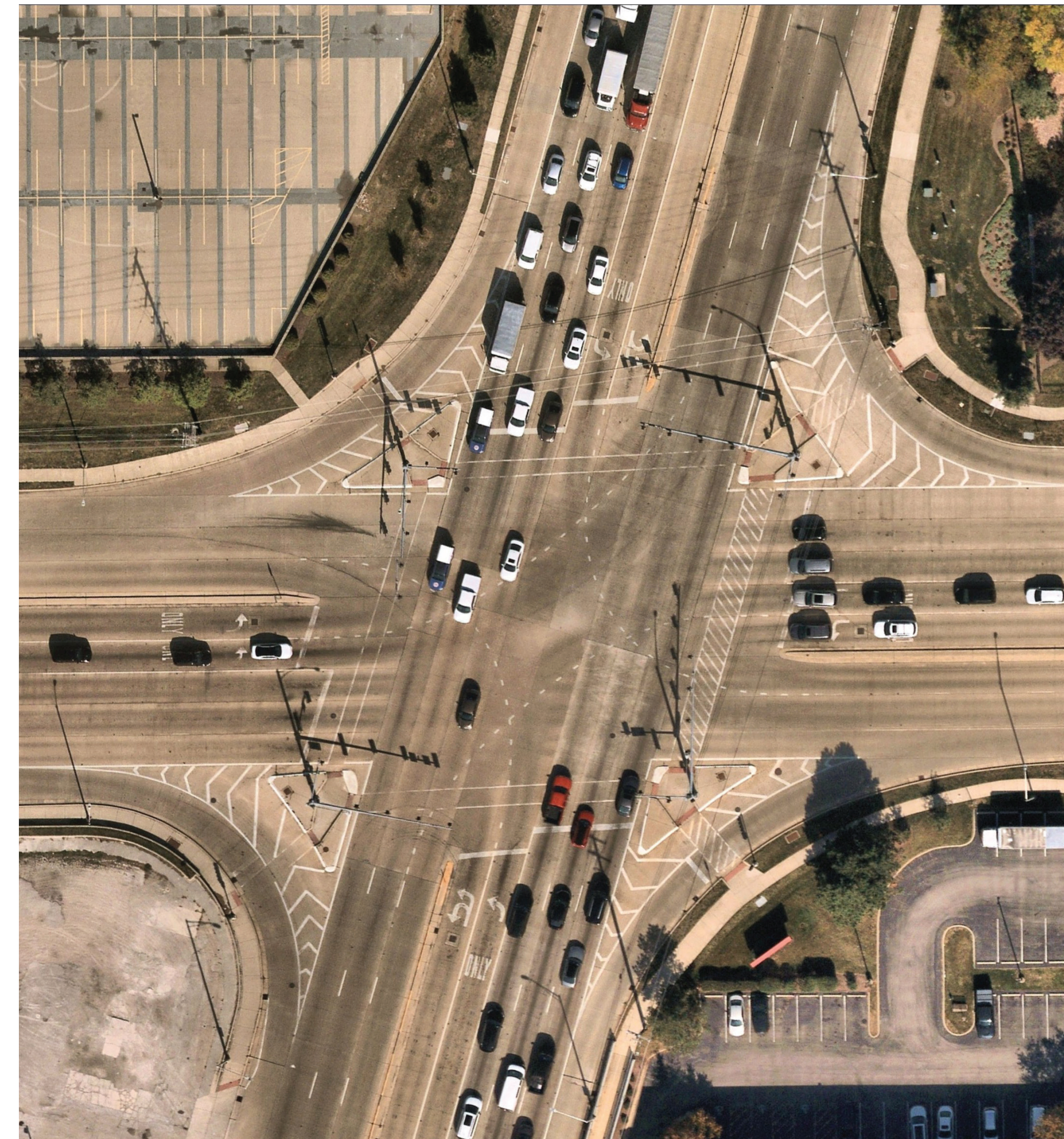
# Project Highlights

## Implemented Road Improvement Plan



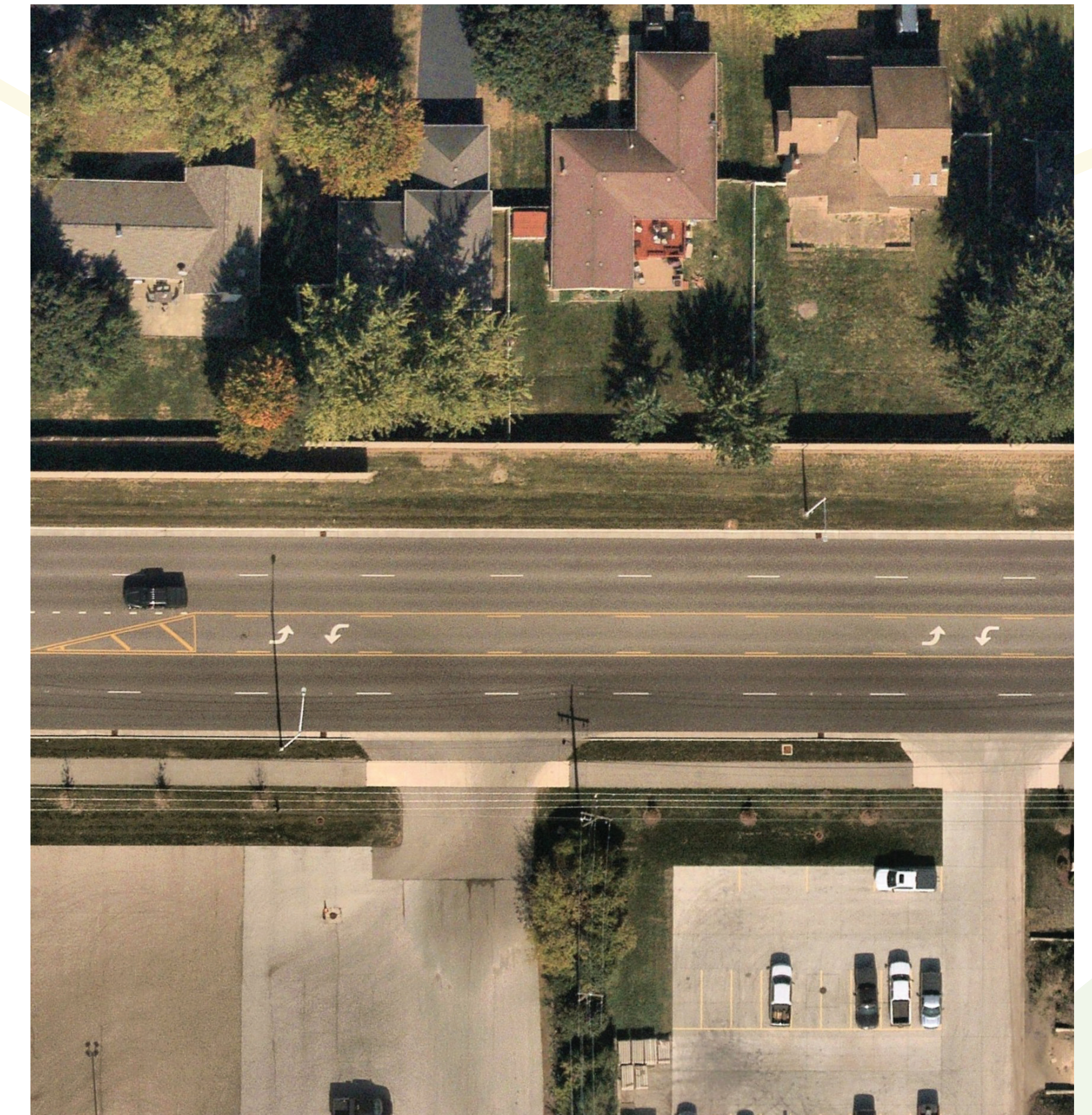
**75th St & Washington St  
Intersection Improvements**

COMPLETED 2012



**Route 59 at Diehl Rd, North  
Aurora Rd, Aurora Rd**

COMPLETED 2016



**North Aurora Widening,  
Frontenac Rd to Fairway Dr**

COMPLETED 2023

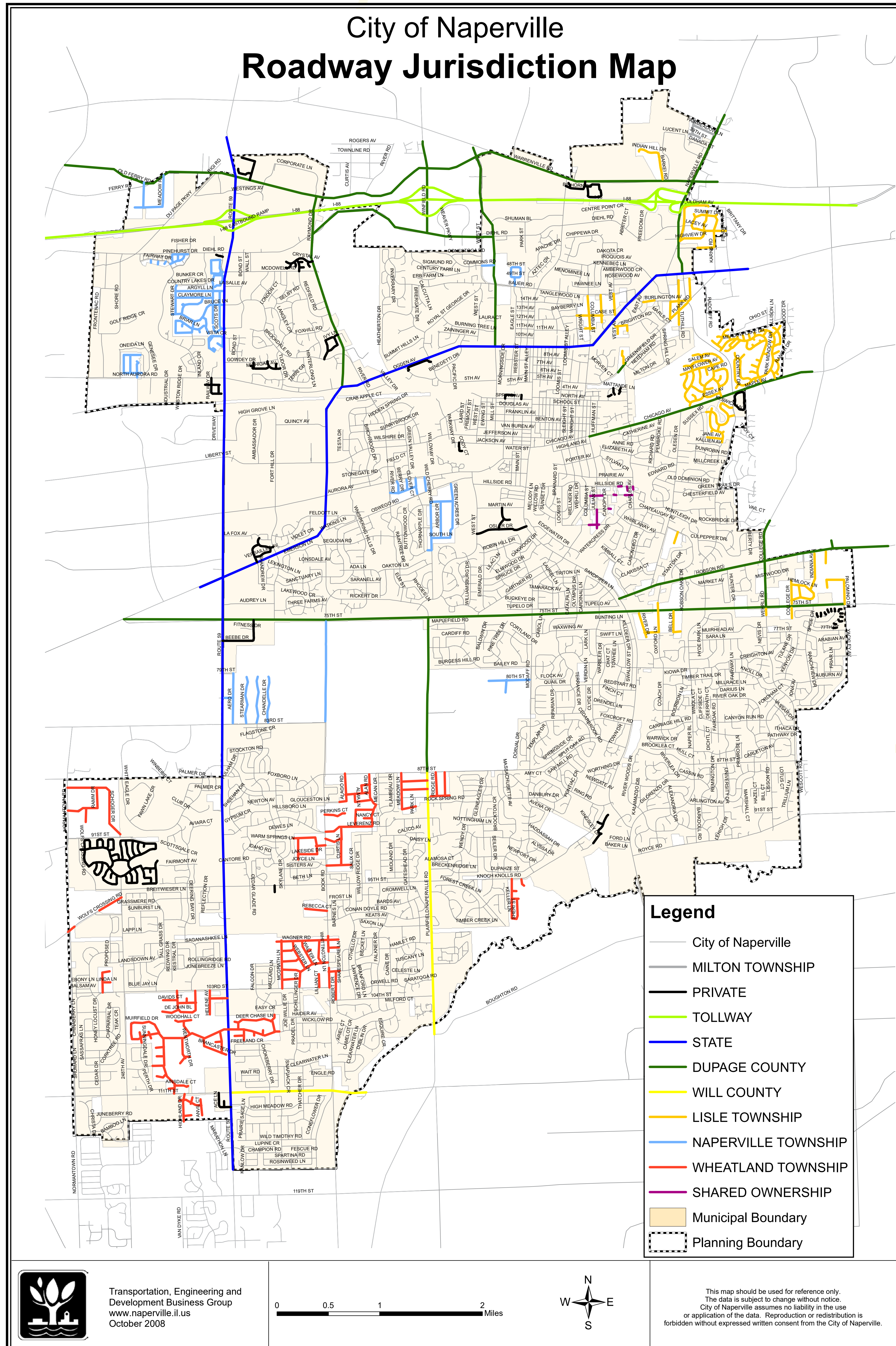
# 2025 Plan Update



*Note: Naperville Road Improvement Plan Update to be completed before December 2025*

*\*TAB - Transportation Advisory Meeting*

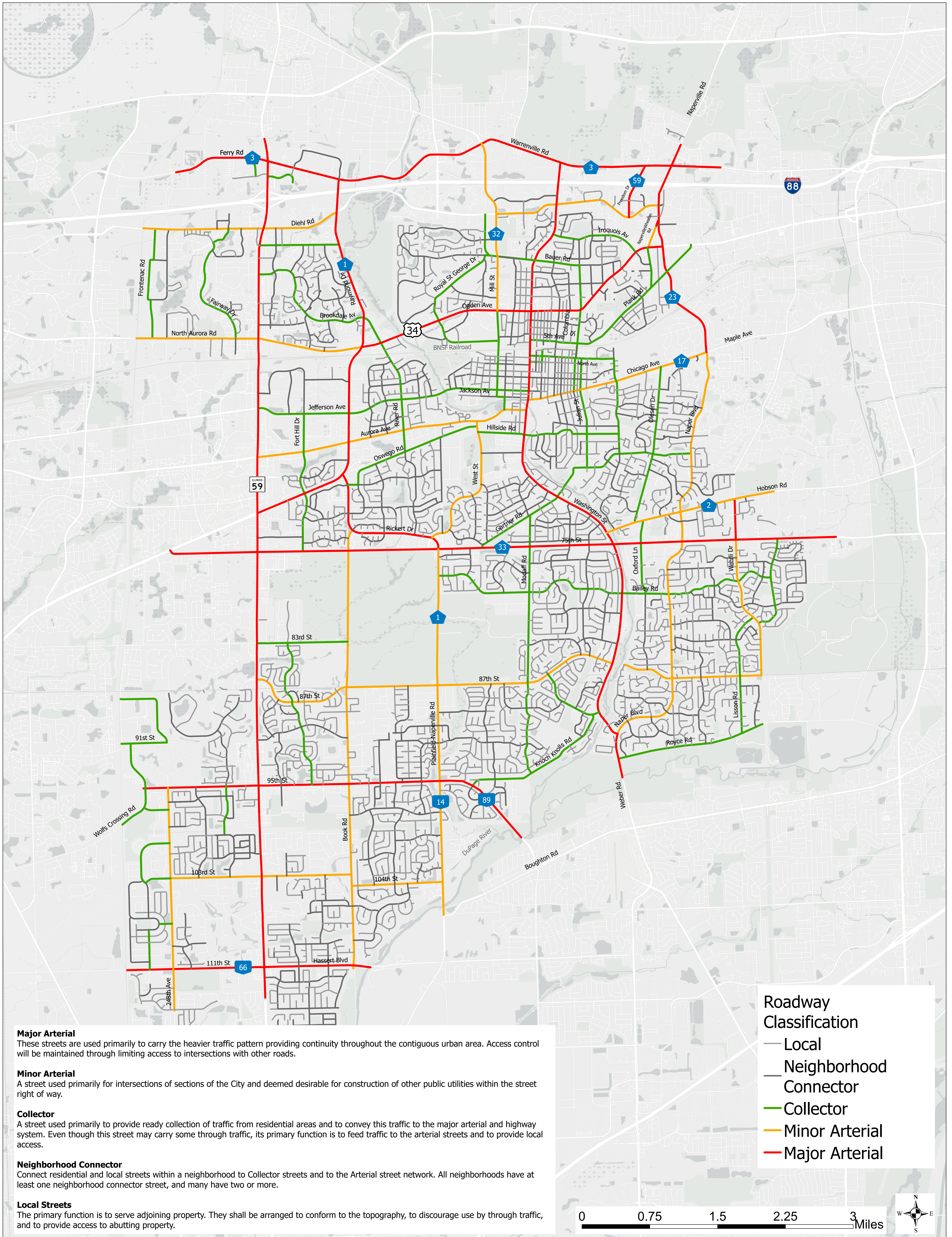
# Roadway Jurisdiction Map



Roadways within the municipal boundary are under the jurisdiction of the City, Tollway, IDOT, Will County, DuPage County, and Townships. The RIP Update applies to intersections and roadway segments under City of Naperville jurisdiction only. Comments on roadways under jurisdiction of other units of government may be shared with the respective agency, but will not be included in the City's RIP Update.



# Roadway Classification



**Major Arterial**  
These streets are used primarily to carry the heavier traffic pattern providing continuity throughout the contiguous urban area. Access control will be maintained through limiting access to intersections with other roads.

**Minor Arterial**  
A street used primarily for intersections of sections of the City and deemed desirable for construction of other public utilities within the street right of way.

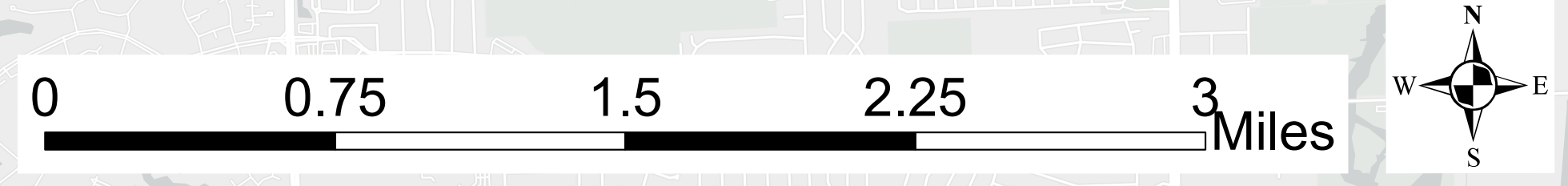
**Collector**  
A street used primarily to provide ready collection of traffic from residential areas and to convey this traffic to the major arterial and highway system. Even though this street may carry some through traffic, its primary function is to feed traffic to the arterial streets and to provide local access.

**Neighborhood Connector**  
Connect residential and local streets within a neighborhood to Collector streets and to the Arterial street network. All neighborhoods have at least one neighborhood connector street, and many have two or more.

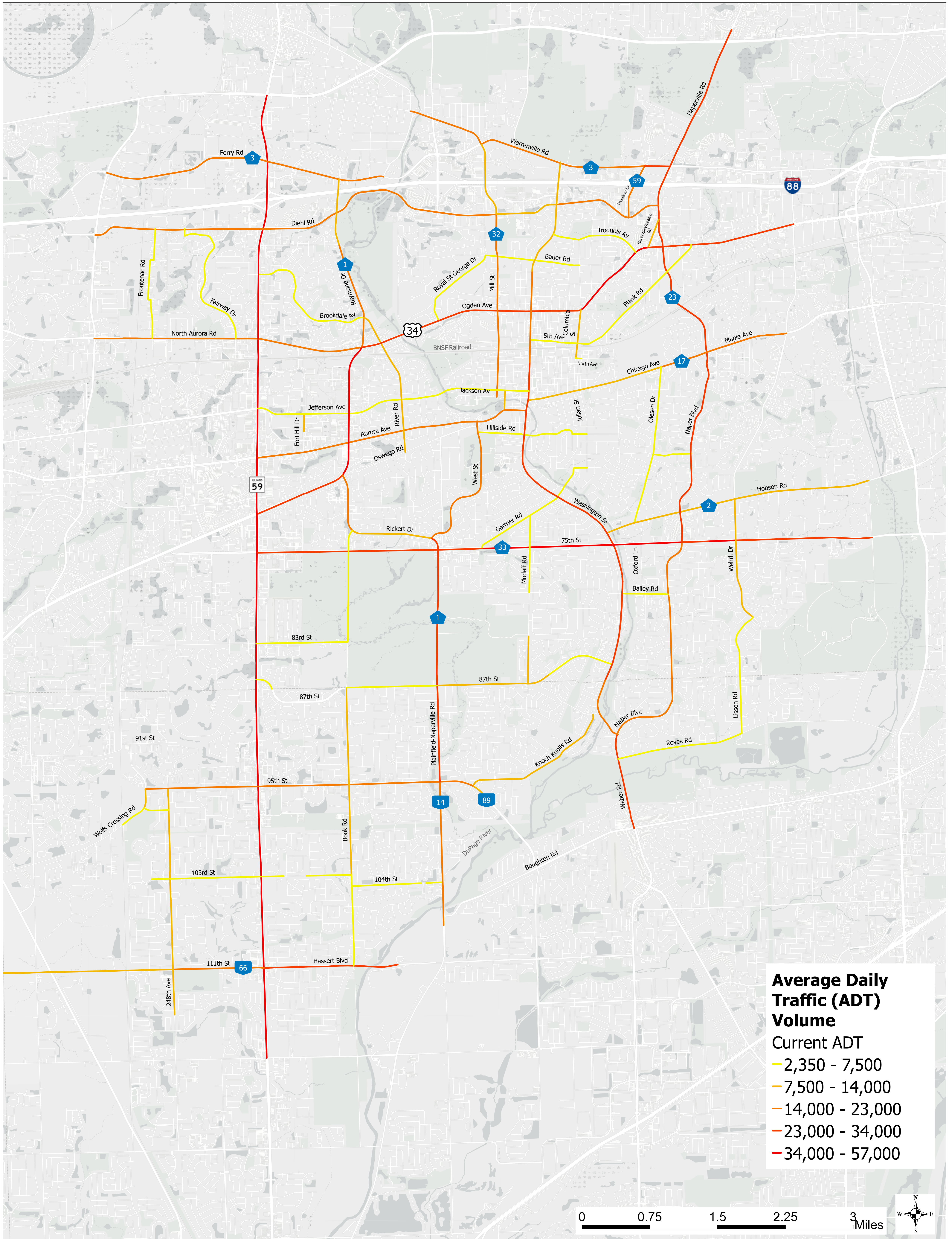
**Local Streets**  
The primary function is to serve adjoining property. They shall be arranged to conform to the topography, to discourage use by through traffic, and to provide access to abutting property.

**Roadway Classification**

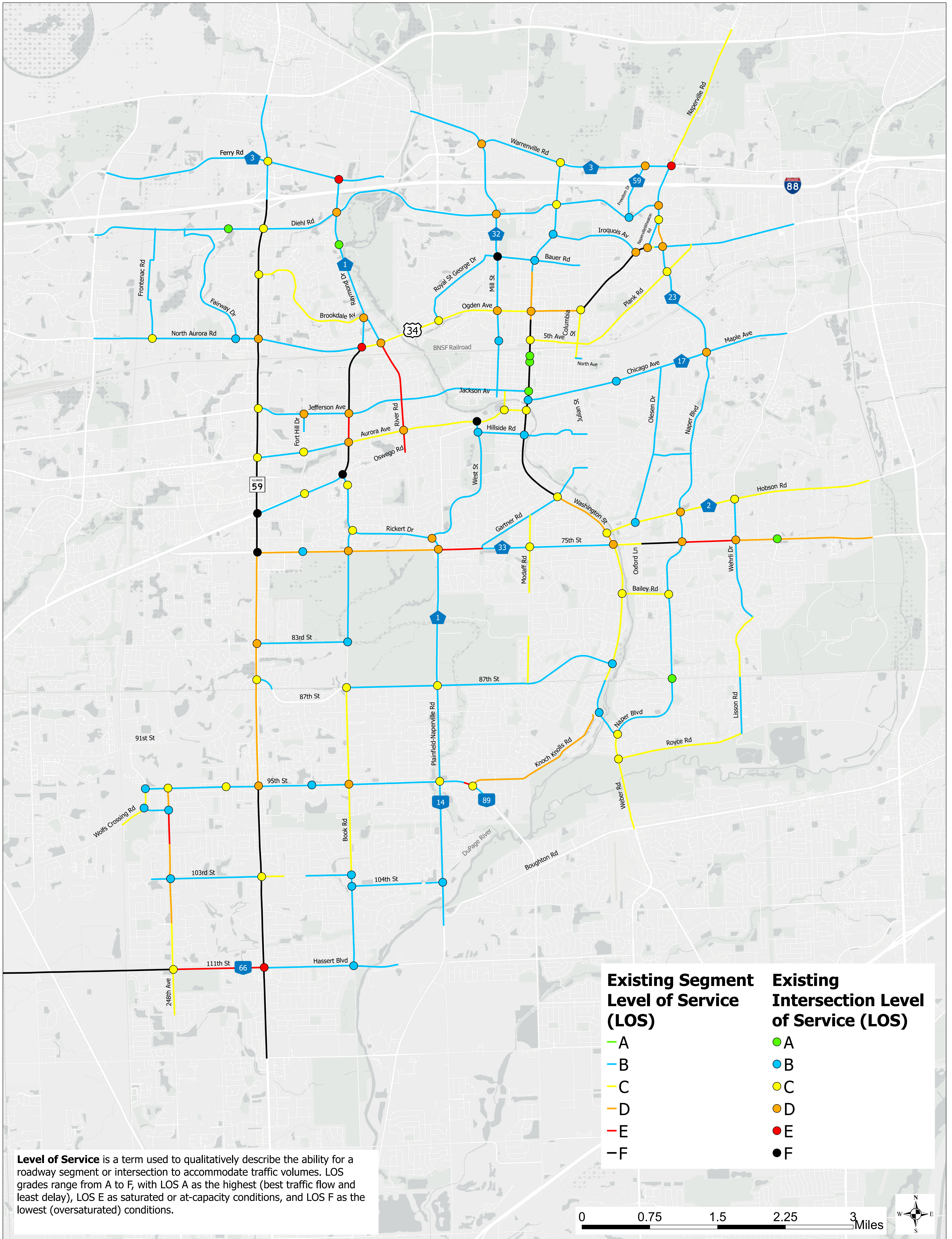
- Local
- Neighborhood Connector
- Collector
- Minor Arterial
- Major Arterial

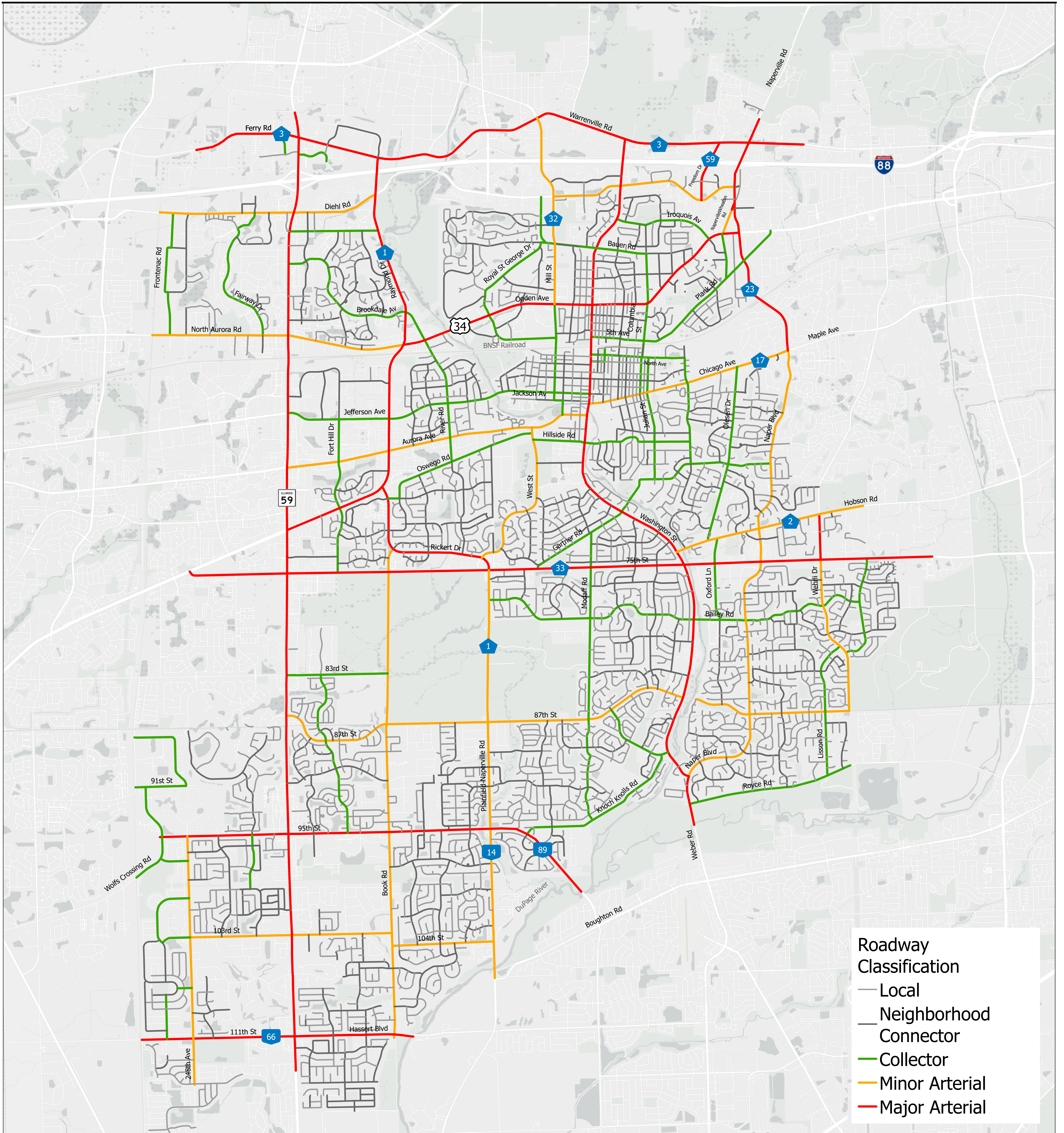


# Existing Average Daily Traffic Volumes



# Existing Level of Service

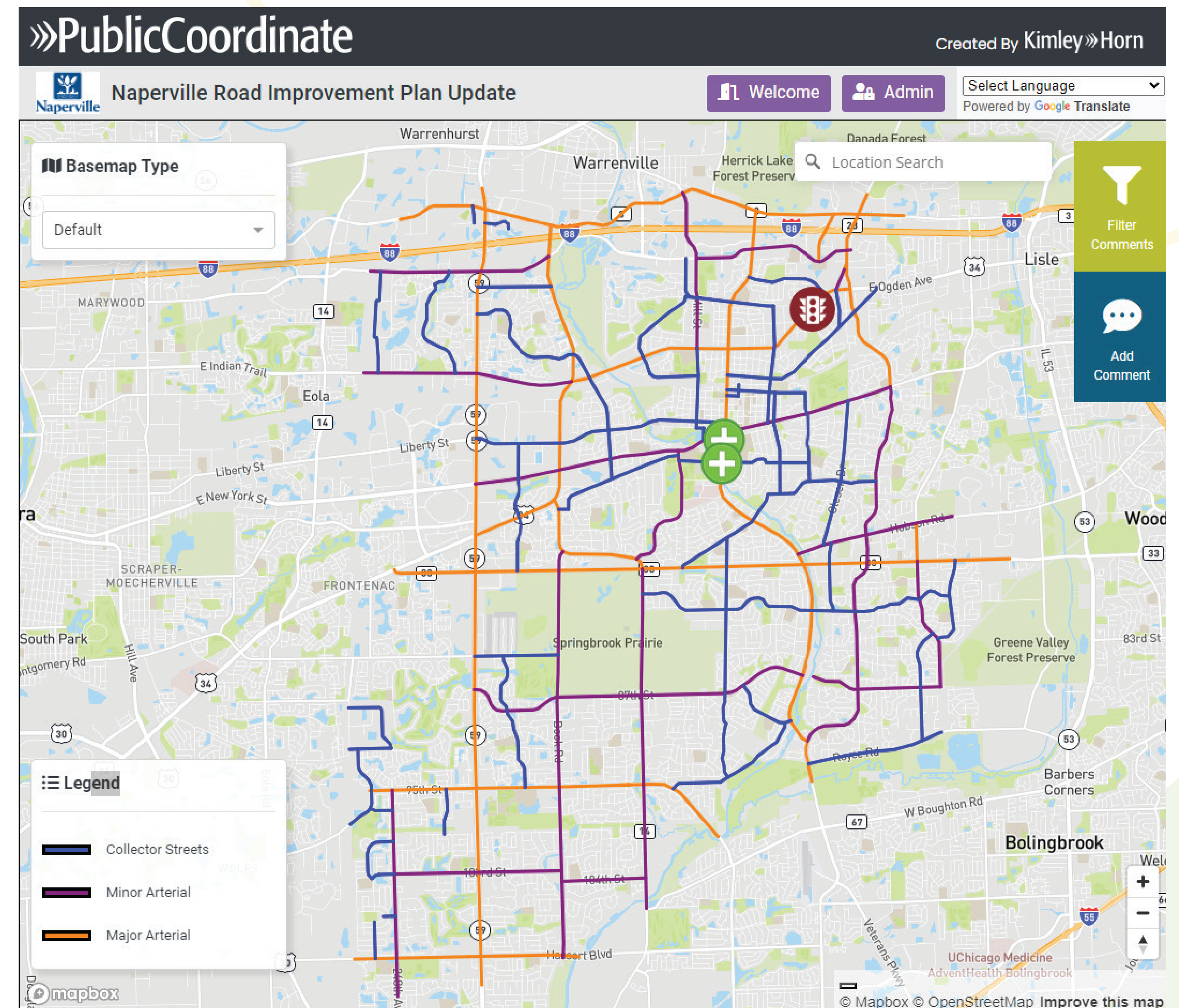




Please provide input on intersections or roadway segments where you may experience traffic delays, poor traffic conditions, or other traffic-related comments. Place a sticker on the location and written comment on the adjacent board. Alternatively, computers are available to submit your comments using an online mapping tool.

# Online Map

- ➔ Map depicts major roadways within the City
- ➔ Provide input online using available computers or mobile device
- ➔ Map will be available for comments via the City's website thru 2/14
- ➔ A summary of all public input will be presented at the 3/6 Transportation Advisory Board (TAB) meeting (tentative)



[https://app.publiccoordinate.com  
/#/projects/NapervilleRIP/map](https://app.publiccoordinate.com/#/projects/NapervilleRIP/map)

## **1** MARCH 6 TRANSPORTATION ADVISORY BOARD MEETING (TENTATIVE)

- Road Improvement Plan overview
- Existing conditions analysis methodology and key findings
- Public input review
- Year 2050 analysis next steps

## **2** YEAR 2050 ANALYSIS → FUTURE TRANSPORTATION ADVISORY BOARD MEETING

- Identify locations with capacity challenges and opportunities
- Evaluate alternative improvements
- Define preliminary improvements

**For more information, visit the project webpage:**

<https://www.naperville.il.us/projects-in-naperville/road-improvement-plan/>

**Share the online map for input thru 2/14:**

<https://app.publiccoordinate.com/#/projects/NapervilleRIP/map>

**Send your questions/comments to:**

[hynesa@naperville.il.us](mailto:hynesa@naperville.il.us)

